

# MX14 INK & STAIN SPOT REMOVER

USING YOUR



IS AS EASY AS

1

APPLY

2

LEAVE

3

WASH

## BEFORE YOU START-

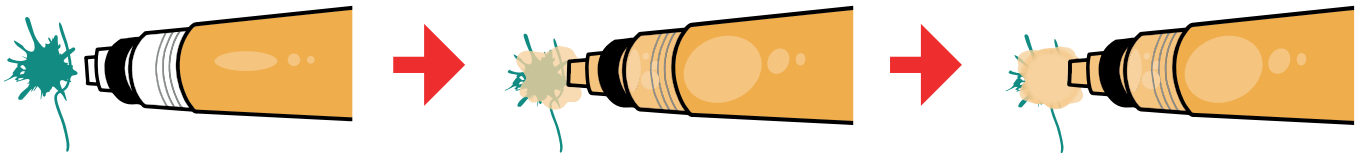
Please carefully read these instructions and contact us if you have any queries  
SHAKE WELL before each use to ensure even formula mix

ENSURE that the area to be cleaned is completely DRY

**IMPORTANT:** ALWAYS test for colour fastness BEFORE using on exposed areas

## NOW LET'S GO...

- 1 APPLY** the MX14 solution directly to the stain or ink mark by injecting it into the area; this is achieved by pushing the cotton tip end in and out using "dabbing" motion. This will release the MX14 from the pen, through the nib and onto the affected area.



- 2 LEAVE** the MX14 on the treated area overnight, this gives the best opportunity for the solution to take effect.

PLEASE NOTE: the older the mark the longer the solution will take to work, so overnight is ideal.

- 3 WASH** out the MX14 solution when a suitable amount of time has passed, either by placing the garment in the washing machine set on a short, cold wash or alternatively by applying water directly to the treated area and sponge/ wipe off. If using a washing machine ensure that the garment is washed in isolation to remove the risk of any cross contamination.

If the stain has gone after your first application MX14 has done it's job and you're done. However, if there is still a mark allow the area to dry and repeat the process as required.



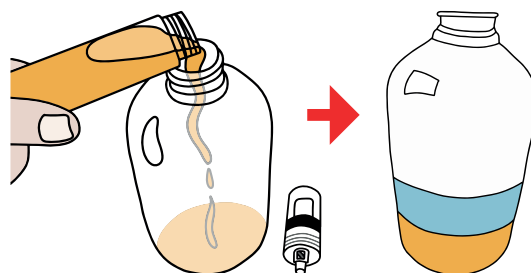
**REMEMBER IF IT'S FADING THEN IT'S WORKING  
PATIENCE IS KEY, RELAX AND PUT YOUR FEET UP  
LET MX14 DO THE HARD WORK FOR YOU...**

# MX14 ANTIBACTERIAL MULTI SURFACE CLEANER

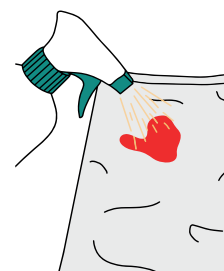
## FOLLOW THESE **3** STEPS TO UTILISE AS AN ANTIBACTERIAL MULTI SURFACE CLEANER OR TO TREAT LARGER FABRIC STAINED AREAS

**1** Holding the pen in an upright position carefully unscrew the nib (it's left hand threaded so right turn loosening) to access the MX14 solution.

**2** Pour the MX14 solution into a clean, empty spray bottle, add clean fresh water, attach and secure its spray head. Gently tip bottle back and forth to mix. For large fabric stained areas or heavy soiled surface areas a mix of 1:1 or 2:1 is recommended. For use as a standard antibacterial multi surface cleaner adding a single MX14 pen to 400ml of clean water is recommended.



**3** For concentrations of 1:1 or 2:1 for use on fabrics spray directly onto the DRY stained area. Leave overnight, remembering the older the stain the more time and applications may be required to remove. When a suitable time has passed place in a washing machine, in isolation, on a short cold wash. Alternatively apply fresh clean water directly to the treated area and sponge/ wipe off.



To use as a antibacterial multi surface cleaner simply spray the area to be cleaned with a light spray of the 400ml solution or 1:1/2:1 mix. Using clean paper towel or absorbent cloth wipe the area dry, ensuring all the solution has been removed for maximum cleaning effect. For heavy soiled areas leave the solution on for a few minutes before removing.



**MX14 IS CLINICALLY TESTED\* AND FULLY APPROVED AS AN ANTIBACTERIAL MULTI SURFACE CLEANER- JUST DILUTE, LIGHTLY SPRAY AND WIPE CLEAN...**

We are so confident in MX14 that we offer a 30 day money back guarantee but we'd like to resolve your issues if we can. So if you have any questions about your MX14 or how it works please just get in touch: Contact us at [www.mx14.co.uk](http://www.mx14.co.uk) or via email at [sales@mx14.co.uk](mailto:sales@mx14.co.uk)

Please Note:

Not suitable for Ultraleather®, nubuck, suede, painted or untreated leather products or surfaces. Excessive dilution of MX14 reduces antibacterial effect. Ideal is one pen to 400ml for general clean.

\*ATP tests conducted as per "3m hygiene management guide for environmental surfaces" before and after RLU comparison.

Always read the manufacturers cleaning instructions before use. Please read our terms and conditions before using.



**SCAN HERE FOR TUTORIAL**